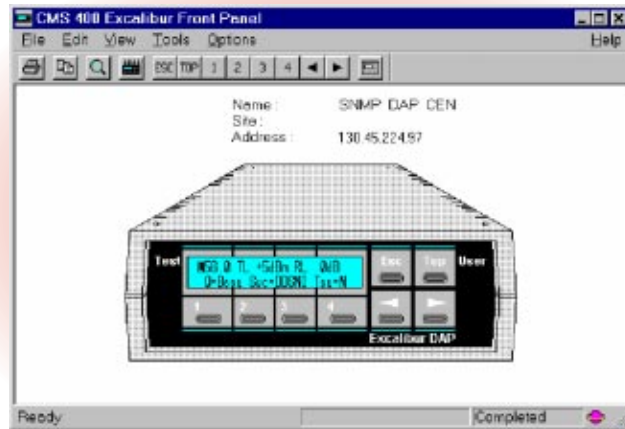


# Excalibur® SNMP DAP Manager

The Excalibur® DAP Manager is an SNMP-based application designed to fully manage, configure, and control the Milgo Excalibur DAP equipped with an SNMP agent. It offers the latest in 32-bit Windows look and feel. This client application runs on the Milgo CMS® 400 network management system. It supports all the facilities and services of the CMS 400 hub/server, including multiple operators, graphic maps, alarm/event management, and automation.

## Configured Traps

All alarms from the SNMP managed Excalibur DAP are sent in the form of SNMP traps. These traps may be received by any SNMP management system. The traps are configured on the CMS 400 network management system to reflect the origin, time of the alarm, and the alarm description. Traps are reported in the alarm log and to the managed device icon in Network Map, CMS 400 Big Picture, and Draw Network functions, making the icon change color to represent the severity of the fault that generated the trap.



## CMS® 400 Application for Windows

### Context-Sensitive Help

The Excalibur DAP Manager provides help when you need it most. Context-sensitive help is available at every level of control and configuration.

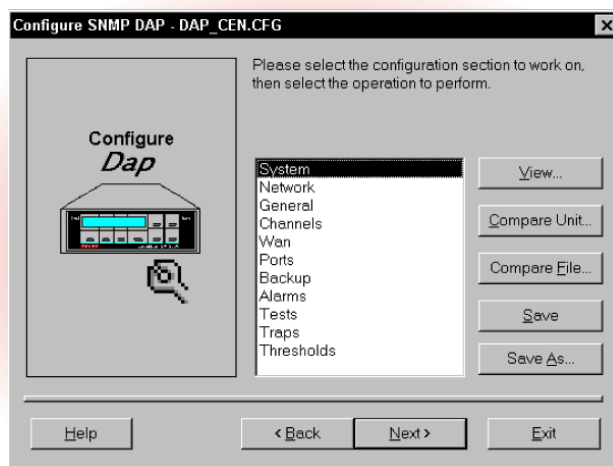
### Telnet Application

The Telnet application is launched from the CMS 400 map(s) or the Excalibur DAP icon. It offers easy access to the built-in Telnet capabilities supported by the Excalibur DAP.

### Advanced MIB Configuration

The MIB variables are presented in logical groups to help simplify operator access to the extensive selection of configuration options provided by the Excalibur DAP. The MIB files are stored in the CMS 400 hub/server database, as well as on the managed device. This simplifies configuration of replacement devices and speeds up queries when no changes are needed. The Excalibur DAP Manager allows you to compare the displayed MIB variables to the database or managed device.

- Complete command and control
- Configured traps
- Context-sensitive help
- Telnet application
- Advanced MIB configuration
- DDS line quality statistics
- Graphic fault management
  - Interface monitor
  - Test path display
- Runs on CMS 400 management system
- A 32-bit distributed Windows application



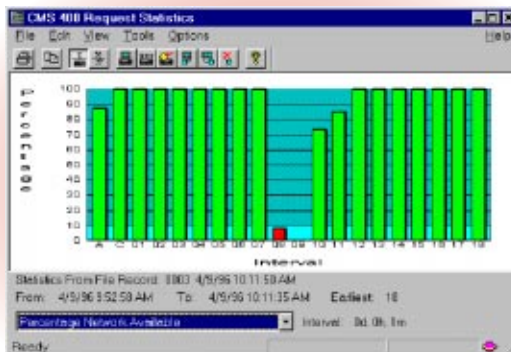
Excalibur DAP Configuration Application

# Excalibur® SNMP DAP Manager

## DDS Line-Quality Statistics

The Excalibur DAP provides 24 programmable data-storage registers within each unit to collect DDS circuit information on user-defined intervals. The statistics include:

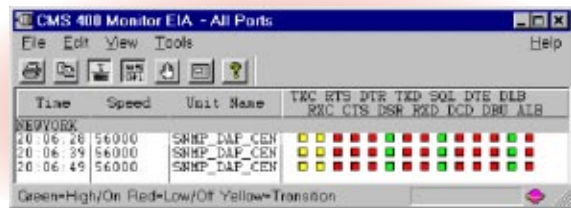
- % Network available
- % Signal present
- % Rx line present
- % Service loop not active
- % Level in threshold
- # Out of service (OOS)
- # Abnormal station codes
- # Unknown control codes
- # Network resyncs



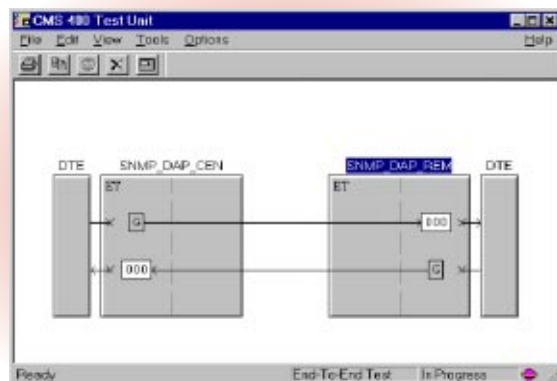
DDS Line-Quality Statistics

## Graphical Fault Management

Monitoring and testing is the most important capability of any managed device. The Excalibur DAP provides BERT and loop testing, as well as line and EIA monitoring using the SNMP protocol. The Excalibur DAP Manager displays the tests in progress and shows the signal pathways and test results in real time, making it easy to quickly identify network faults and select the proper test with minimal product training.



Excalibur DAP Monitor EIA



Excalibur DAP Test Function

The Excalibur DAP Manager application runs on Microsoft Windows 95/98 or Microsoft Windows NT.

Our policy of continuous development may cause the information and specifications contained herein to change without notice.

Excalibur and CMS are registered trademarks of Milgo Solutions, Inc. All other logos and product names are trademarks or registered trademarks of their respective companies.

©1999 Milgo Solutions, Inc. All rights reserved. Printed in U.S.A.

3C1489 5/99

**MILGO**  
Solutions

Americas  
1619 North Harrison Parkway  
Sunrise, Florida 33323-2802, U.S.A.  
Telephone: 1-800-333-4143  
Telephone: 1-954-846-1601 (outside U.S.)  
Fax: 1-954-846-4942

Europe / Middle East / Africa  
Landata House, Station Road  
Hook, Hampshire, RG27, 9JF, England  
Telephone: 44-(0) 1256-763911  
Fax: 44-(0) 1256-382059

Asia / Pacific  
26 Ayer Rajah Crescent, #04-06  
Ayer Rajah Industrial State  
Singapore 139944  
Telephone: 65-779-2200  
Fax: 65-778-6400

Internet: <http://www.milgo.com>

