

Excalibur® ISX™ 5300 Manager

The Excalibur® ISX™ 5300 Family Manager is an SNMP-based application designed to fully manage, configure, and control the Milgo ISX 5300 family of T-1/E-1 access devices equipped with an SNMP agent. It offers the latest in 32-bit Windows look and feel. This client application runs on the Milgo CMS® 400 network management system. It supports all the facilities and services of the CMS 400 hub/server, including multiple operators, graphic maps, alarm/event management, and automation.

Advanced MIB Configuration

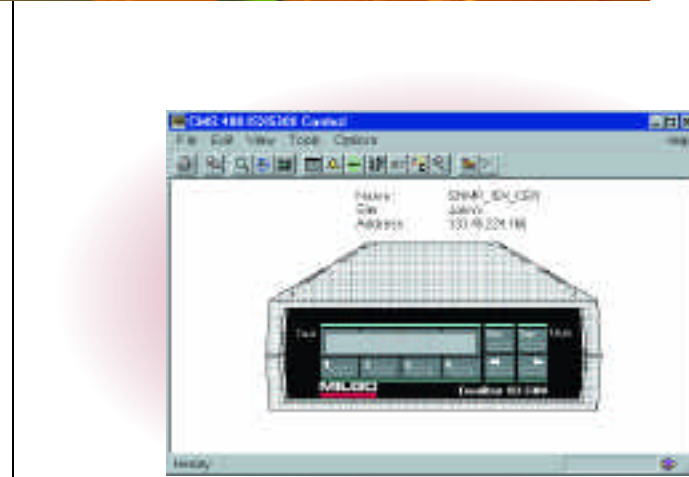
The MIB variables are presented in logical groups to help simplify operator access to the extensive selection of configuration options provided by the ISX 5300 series device.

Context-Sensitive Help

The Excalibur ISX 5300 Manager provides help when you need it most. Context-sensitive help is available at every level of control and configuration.

Configured Traps

All alarms from the SNMP managed device are sent in the form of SNMP traps. These traps may be received by any SNMP management system. The traps are configured on the CMS 400 network management system to reflect the origin,



CMS® Application for Windows

time of the alarm, and the alarm description. Traps are reported in the alarm log and to the managed device icon in Network Map, CMS 400 Big Picture, and Draw Network functions, making the icon change color to represent the severity of the fault that generated the trap.

Telnet Application

The Telnet application is launched from the CMS 400 map(s) or the ISX 5300 icon. It offers easy access to the built-in Telnet capabilities supported by the ISX 5300 series units.

- Complete command and control
- Advanced MIB configuration
- Configured traps
- T-1 ESF (Extended Super Frame) statistics
- Graphic fault management
 - Interface monitor
 - Test path display
- Runs on CMS 400 network management system
- A 32-bit distributed Windows application
- Telnet application
- Context-sensitive help



Rear Panel View

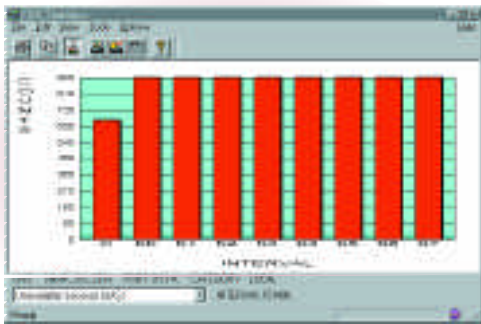


Configuration Application

Excalibur® ISX™ 5300 Manager

T-1 ESF Statistics

The ISX 5300 series MIB provides complete Extended Super Frame statistics that describe current and historical T-1 line conditions and error counts. The ESF statistics-monitoring function provides an effective human interface to display these statistics in a precise column format.



T-1 ESF Line Quality Statistics

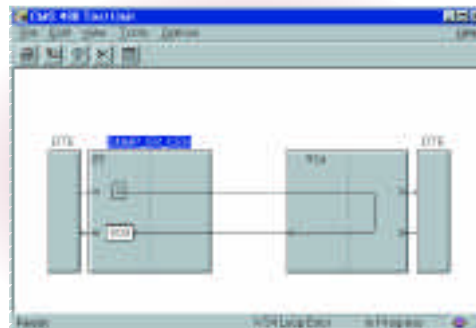
Graphical Fault Management

Monitoring and testing is the most important capability of any managed device. ISX 5300 series products provide BERT and loop testing, as well as line and EIA monitoring using the SNMP protocol. The ISX 5300 Manager displays the tests in progress and shows the signal pathways and test results in real time, making it easy to quickly identify network faults and select the proper test with minimal product training.



Line	Speed	Test Name	LOS	LOF	LOS	LOS	LOS	LOS	LOS
LI-20-34	14000	SRS-LOS-CB1							
LI-20-34	14000	SRS-LOS-CB5							
LI-20-34	14000	SRS-LOS-CB8							
LI-20-45	14000	SRS-LOS-CB4							

Monitor EIA



Test Application

The ISX 5300 Manager application runs on Microsoft Windows 95/98 or Microsoft Windows NT.

Our policy of continuous development may cause the information and specifications contained herein to change without notice.

CMS and Excalibur are registered trademarks of Milgo Solutions, Inc. ISX is a trademark of Milgo Solutions, Inc. All other logos and product names are trademarks or registered trademarks of their respective companies.

©1999 Milgo Solutions, Inc. All rights reserved. Printed in U.S.A.

3C1490 5/99

MILGO
Solutions

Internet: <http://www.milgo.com>

Americas
1619 North Harrison Parkway
Sunrise, Florida 33323-2802, U.S.A.
Telephone: 1-800-333-4143
Telephone: 1-954-846-1601(outside U.S.)
Fax: 1-954-846-4942

Europe / Middle East / Africa
Landata House, Station Road
Hook, Hampshire, RG27, 9JF, England
Telephone: 44-(0) 1256-763911
Fax: 44-(0) 1256-382059

Asia / Pacific
26 Ayer Rajah Crescent, #04-06
Ayer Rajah Industrial State
Singapore 139944
Telephone: 65-779-2200
Fax: 65-778-6400

