

PremNet® 5000 Manager

The PremNet® 5000 Manager is an SNMP-based software application designed to fully manage and control the Milgo PremNet 5000 system equipped with the Enhanced Network Management Module (ENMM). This client application runs on the Milgo CMS® 400 network management system.

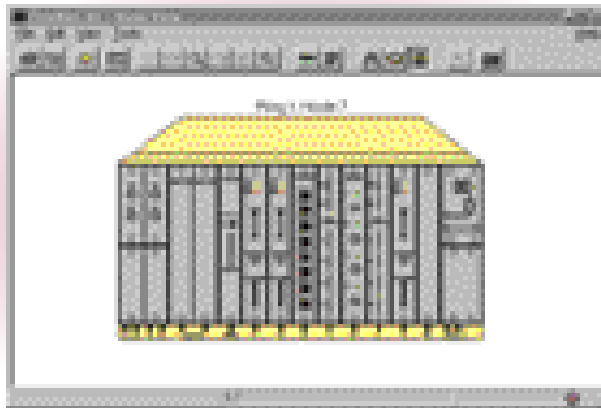
The PremNet 5000 application allows you to configure virtual circuits over a PremNet ring network, using a graphical user interface (GUI). In addition, you can monitor each interface module, its performance, provide extended network-wide statistics, and integrate traps simply by selecting the element to be managed.

Transport of a variety of applications, including data, voice, and video over the PremNet backbone can be accommodated easily via the management system:

- In the case of Ethernet and Token Ring, each virtual circuit represents a network segment.
- A video or serial data circuit represents a point-to-point communication path, using a PremNet transmission media.
- In the case of a voice circuit, it represents a physical port mapping associated with each connection.



Network configuration is "point and click" with the graphical view of the network.



CMS® Application for Window

Just Point and Click

Create, modify, or delete circuits by "pointing and clicking" in the graphical view of the rings. The PremNet 5000 application creatively displays each node in a ring as a chassis with individual card slots.

When creating a circuit, available slots are highlighted for quick selection of suitable I/O modules that are available for the type of circuit being configured. Additionally, as I/O modules are selected, the circuit definition appears as a textual description in a separate window.

Available On-line Testing

Testing features provide added value to the system's credibility. The PremNet 5000 system can run tests of each module from the central site. Card-specific test applications provide screens that are tailored to each specific technology to simplify and facilitate real-time diagnostics. In addition, individual ports can be tested and the results monitored. If desired, tests can be reconfigured using different parameters whenever you choose.

Reports

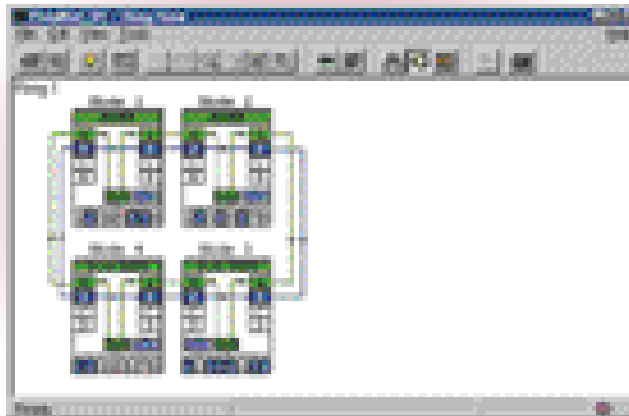
Interactive reports provide operator prompts for part number, revision levels or serial number range and return network or nodal level reports to help track your equipment. Reports are handy to show existing revision levels when planning for upgrades.

- Detailed views of PremNet interface modules
- Runs on CMS400 network management system
- Preconfigured SNMP command groups
- Virtual circuit configuration
- On-line testing
- Inventory reports
- Dynamic ring monitor
- Graphical User Interface (GUI) supported

PremNet® 5000 Manager

Monitor the Rings

The Ring Monitor feature provides a graphical view of the physical ring layout, status and operation. You can select a PremNet node in the ring, then request summary and statistics for the node. Or, you can display the node's current status. When a ring break is detected and bypassed by PremNet, the application displays the affected components, the position of the break and the current signal path inside and outside the chassis on the ring. The content of the display is based on information available in the PremNet Management Information Base (MIB).



Graphical views may be oriented to display either the A-B or the C-D physical ring.

technical specifications

Management Platform	RAM (Minimum)	Disk Space (Minimum)
Milgo CMS 400	16 Mbytes	15 Mbytes

The PremNet 5000 Manager application runs on Microsoft Windows 3.1, Microsoft Windows for Workgroups, Microsoft Windows 95 or Microsoft Windows NT. It requires WIN32S to be installed when using Microsoft Windows 3.1 or Windows for Workgroups.

Our policy of continuous development may cause the information and specifications contained herein to change without notice.

PremNet and CMS are registered trademarks of Milgo Solutions. All other logos and product names are trademarks or registered trademarks of their respective companies.

©1999 Milgo Solutions, Inc. All rights reserved. Printed in U.S.A.

3C1526 4/99

MILGO
Solutions

Internet: <http://www.milgo.com>

Americas
1619 North Harrison Parkway
Sunrise, Florida 33323-2802, U.S.A.
Telephone: 1-800-333-4143
Telephone: 1-954-846-1601 (outside U.S.)
Fax: 1-954-846-4942

Europe / Middle East / Africa
Landata House, Station Road
Hook, Hampshire, RG27, 9JF, England
Telephone: 44-(0) 1256-763911
Fax: 44-(0) 1256-382059

Asia / Pacific
26 Ayer Rajah Crescent, #04-06
Ayer Rajah Industrial State
Singapore 139944
Telephone: 65-779-2200
Fax: 65-778-6400

